

Resilmount Resilient Channel

DESCRIPTION

The Resilmount M581 resilient channel is manufactured from 0.45BMT galvanised steel and is available in 3650mm lengths.

The fundamental purpose of the resilient channel is to provide a means for attaching the plasterboard to the supporting structure without actually permitting the plasterboard to directly contact the structure. It's the de-coupling of the plasterboard from the framing that provides the improved sound transmission loss.

Resilient channels are commonly used in multi-residential housing projects. The M581 resilient channel is manufactured from high grade galvanised steel and is suitable for fixing to timber and steel studs for the purpose of reducing sound transmission. The fixing leg of the channel is supplied with pre-punched holes to aid on-site installation and reduce construction time.

APPLICATION

Constructing an internal acoustic wall on a budget that still complies with the standards and building code is achievable using Resilmount's M581 resilient channel available from Studco. In fact, Resilmount's one-leg resilient channel is one of the most effective, low-cost methods of reducing sound travelling through walls in homes, apartments and offices.

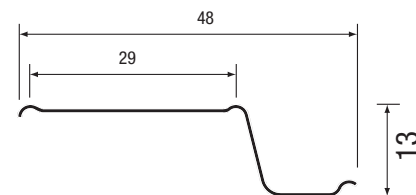
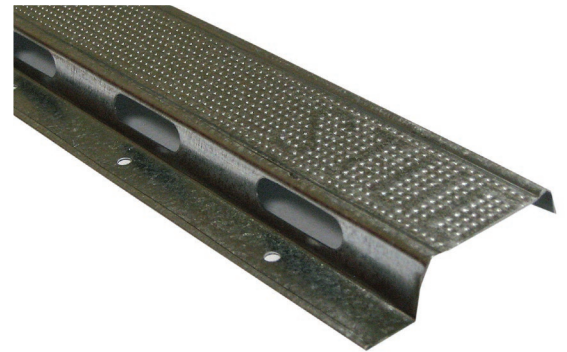
FEATURES

- Low cost acoustic wall solution.
- Channel effectively isolates plasterboard from the framing studwork, resulting in substantial weakening of the sound waves.
- Effortless installation process – RRC comes pre-punched for fast and easy fixing.
- Can be used in any application where sound transmission is a concern.
- Holes in the web of the channel provide flexibility.

ORDERING INFORMATION

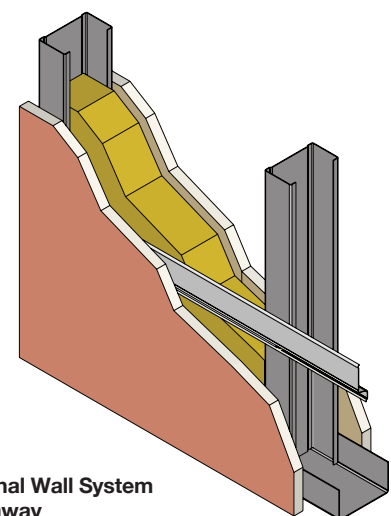
Part No.	Resilmount Resilient Channel	Length mm.	Sub pack	Stock pack
M581	Resilmount Resilient Channel	3658	10	100

Lead time and minimum quantities may apply



INSTALLATION NOTES

Resilient channel fixed to stud wall to provide reduction in sound transmission. Refer to table over page for Resilient Channel spans.



Internal Wall System cut-away

Datasheet

Resilmount Resilient Channel



TECHNICAL DATA SPAN TABLE

Maximum Spans - M581 Span Table		
FURRING CHANNEL SPACING	450mm	600mm
PLASTERBOARD LINING	CONTINUOUS SPAN	
1 LAYER 10MM	600mm	600mm
1 LAYER 13MM	600mm	600mm
1 LAYER 16MM	600mm	600mm
2 LAYERS 10MM	600mm	600mm
2 LAYERS 13MM	600mm	600mm
2 LAYERS 16MM	600mm	600mm

Notes:

1. Span tables are based on the effective section properties as per AS/NZS 4600.
2. Strength and serviceability criteria compliant.
3. Serviceability deflection limit L/360.



WARRANTY

This product is covered by a guarantee. Conditions and limitations of guarantees and warranties are set out in Studco Project Guarantee certificate.



FURTHER ASSISTANCE

Contact the technical engineering team at Studco Technical Services for assistance with specifications, product selection, acoustic engineering and structural engineering enquiries.

T: 1800 STUDCO or email techadvice@studcosystems.com.au



ACCREDITATION/CERTIFICATION



Information contained within this document supersedes all previous versions and is subject to change without notice.

For Sales Enquiries, please contact Studco Building Systems 1800 STUDCO (1800 788 326)